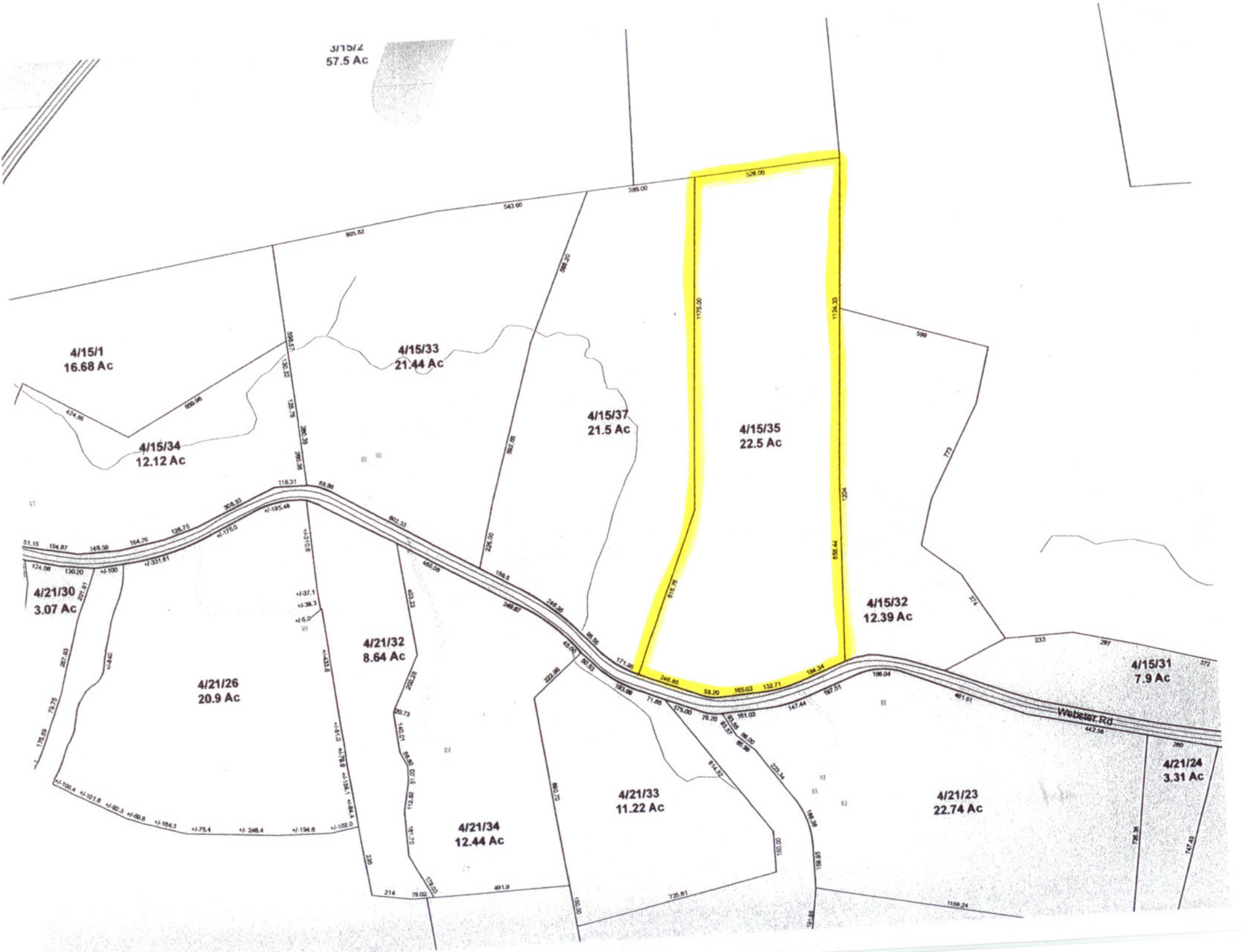
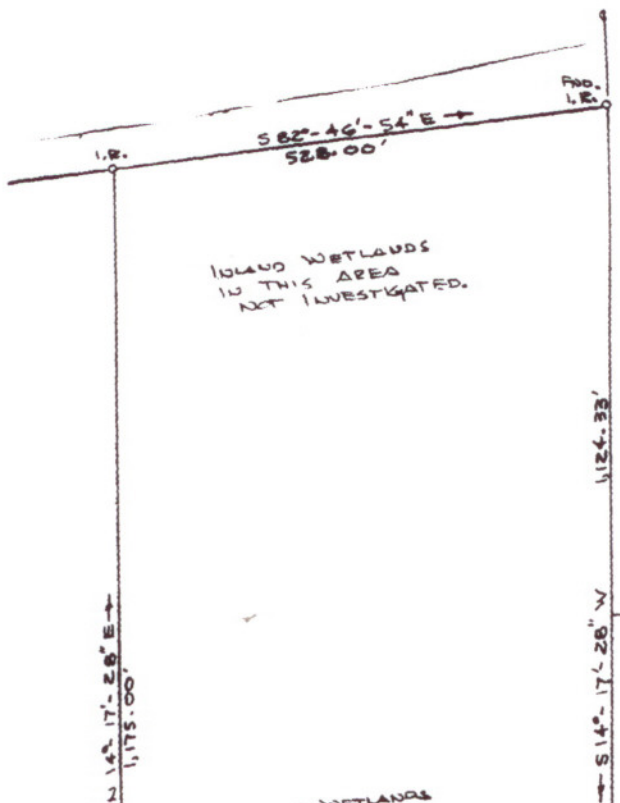


3/15/2  
57.5 Ac



STATE OF CONNECTICUT  
 NIPMUCK STATE FOREST  
 DEPT. OF ENVIRONMENTAL PROTECTION  
 DIVISION OF FORESTRY  
 475 ELM STREET  
 HARTFORD, CT 06106



INLAND WETLANDS  
 IN THIS AREA  
 NOT INVESTIGATED

EXISTING  
 LOT # 2

REMAINING AREA:  
 830,512  $\pm$  (DEED)  
 19,075 AC.  $\pm$  (DEED)  
 882,403  $\pm$  (COMPUTED)  
 20,287 AC.  $\pm$  (COMPUTED)

