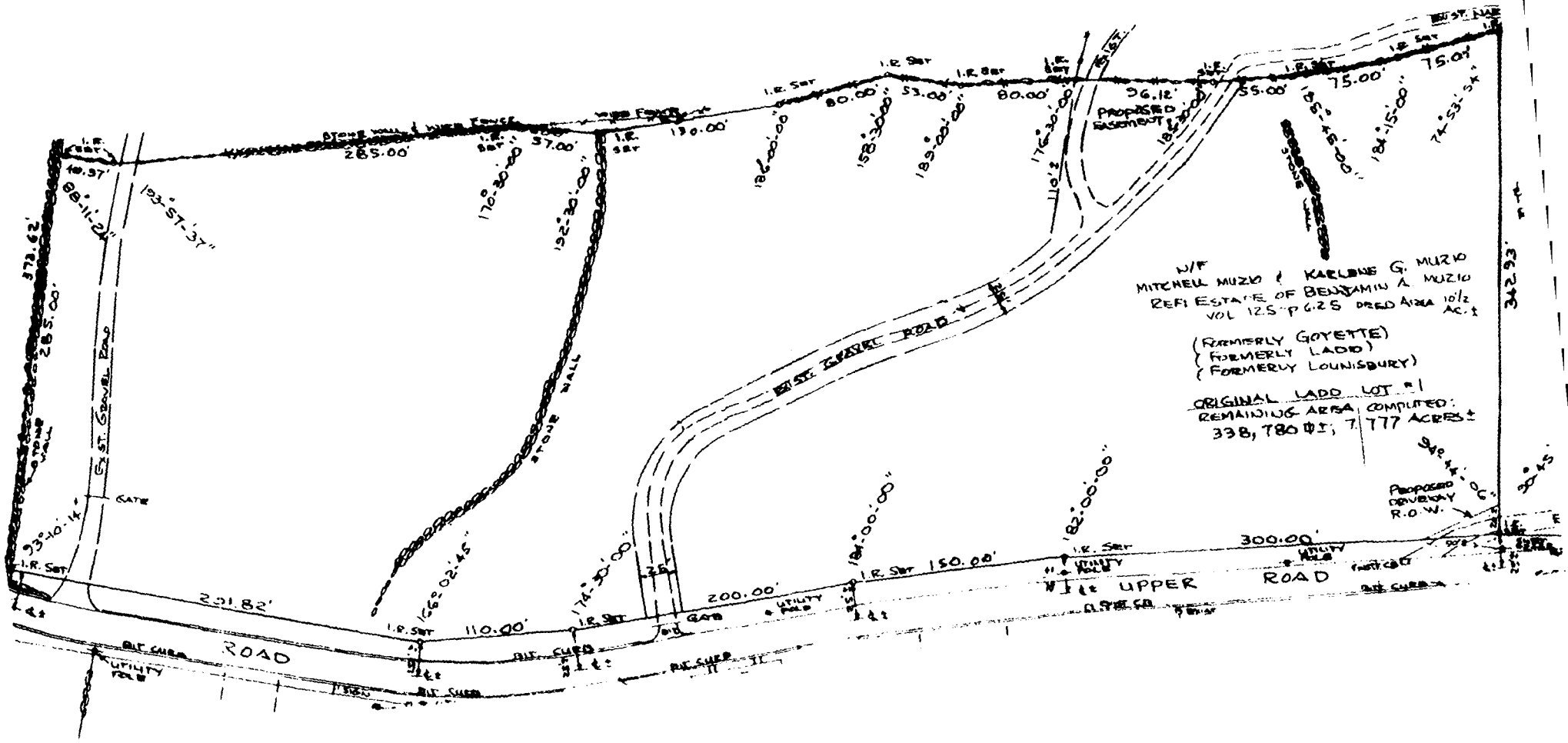


11 AC (BEAUBRY)



W/F
 MITCHELL MUZIO & KARLENE G. MUZIO
 REFI ESTATE OF BENJAMIN A. MUZIO
 VOL 125-P 625 PREG AREA 10 1/2 AC ±

(FORMERLY GOYETTE)
 (FORMERLY LADD)
 (FORMERLY LOUISBURY)

ORIGINAL LADD LOT #1
 REMAINING AREA COMPUTED:
 338,780.01, 7,777 ACRES ±

342.93' ±
 PROPOSED DRIVEWAY
 R.O.W.

300.00'
 WILE UPPER ROAD
 UTILITY POLE

ROAD

UTILITY POLE

UTILITY POLE

UTILITY POLE

UTILITY POLE

UTILITY POLE

UTILITY POLE

UTILITY POLE

UTILITY POLE

UTILITY POLE

UTILITY POLE

UTILITY POLE

UTILITY POLE

UTILITY POLE

UTILITY POLE

UTILITY POLE